

Everyone welcome

- Call in for a free cuppa and a chat
- Find out what's on locally
- Digital support available every third Thursday of the month

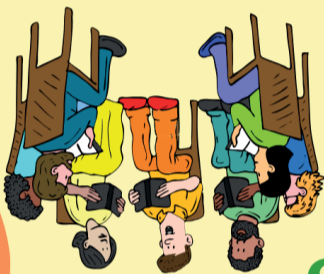


room at the folk Hall

Open House



in the Discovery



10AM - 12NOON
every Thursday

Please send details of your community events to us by the dates below:
February/March send us information for the What's On by 16th December 2023
April/May send us information for the What's On by 28th February 2024

The New Earswick Annual is produced once a year. The New Earswick What's On is produced every other month which is kindly supported by NERF. We try to include a wide range of local activities in each issue so if you would like your event or group featuring in the What's On, please get in touch with us at newwhatson@jrht.org.uk or call us on 07773 219779.
Thank you to Louise Cantley for the cover image. The photograph was taken at the New Earswick Nature Reserve in December 2020.
We are always looking for local images for the cover of the What's On so if you have any photographs taken in New Earswick that you would like to share for the cover then please get in touch by emailing: newwhatson@jrht.org.uk

New Earswick Venue Contacts

The Folk Hall
(01904) 769621
www.newearswickfolkhall.com

New Earswick Sports Club
(01904) 750103
www.newearswicksportsclub.co.uk

New Earswick Friends Meeting House
www.newearswick.quakermeeting.org

New Earswick Swimming Pool
www.friendsofnewearswickpool.co.uk

The Joseph Rowntree School
(01904) 552153
www.josephrowntree.co.uk

St. Andrew's Church
(01904) 768006
www.huntingtonparish.org.uk

To find out more about events at the Folk Hall please visit:
www.newearswickfolkhall.org.uk

@FolkHallJRHT

@JRHT_FolkHall

@newearswickfolkhall

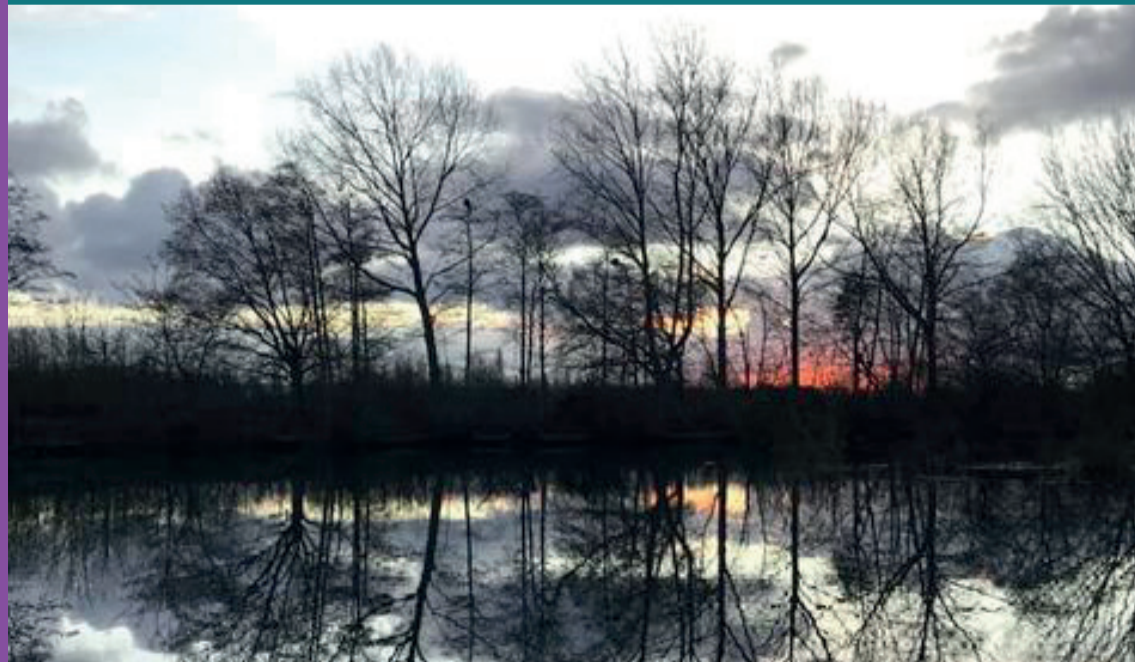


Please recycle

New Earswick What's On

Connecting you to what's on in your community

December 2023 / January 2024



Regular activities December 2023/January 2024

Monday

| | | |
|--|---------------|-------------------------|
| Public Swim (adults only) | 8:30am–9:15am | @ NE Pool |
| Public Swim | 9:15am–10am | @ NE Pool |
| NE Community Wood Yard | 10am–2:30pm | @ NE Wood Yard |
| York Theatre Royal Youth Theatre | 4:45pm–6:45pm | @ FH |
| NE Parish Council (Restart 15 January) | 7pm–9pm | @ FH |
| Bridge Club | 6:40pm–9:45pm | @ Friends Meeting House |

Tuesday

| | | |
|---|-----------------|-------------------------|
| NE Library Adult Craft (crochet & knitting) Group. Feel free to bring your own project. | 9am–12pm | @ NE Library |
| Pilates for Improvers (12 December only. Restart 9 January) | 9:30am–10:15am | @FH |
| Community Action for Nature | 10am–12pm | @ Lock Cottage |
| NEST | 10am–12pm | @ NE Community Garden |
| Seated Pilates: A gentler approach (12 December only. Restart 9 January) | 10:30am–11:15am | @ FH |
| Pilates for Beginners: Improve flexibility & strength (12 December only. Restart 9 January) | 11:30am–12:15pm | @ FH |
| Craft group | 9am–12pm | @FH |
| NE Library Under 5s Storytime | 11am–11:30am | @ NE Library |
| NE Library Lego Club (3–12yrs) | 3:45pm–4:30pm | @ NE Library |
| Woodcraft Folk (4–6yrs) & (6–9yrs) | 4:30pm–5:30pm | @ Friends Meeting House |
| Kidz Klub (5–11yrs, term time only) | 5:45pm–7pm | @ St Andrew's Church |
| Public Swim | 7pm–7:45pm | @ NE Pool |
| Public Swim (adults only lane swim) | 7:45pm–8:30pm | @ NE Pool |
| Book Talk (5 December) | 1pm–2:30pm | @ FH |
| NERF (first Tues of month) | 6:30pm–8:30pm | @ FH |
| Cake and Company (every other Tues) | 1:45pm–3:45pm | @ St Andrew's Church |

Wednesday

| | | |
|---|----------------------------|----------------------|
| Move It or Lose It with Catherine: Over 60s specialist seated exercise class (Last class 20 December. Restart 10 January) | 10am–11am | @ FH |
| Tots (under 5s, term time only) | 10am–11:30am | @ St Andrew's Church |
| NELLI | 10am–12pm | @ FH |
| NE Community Garden | 10am–12pm | @ Sleeper Path |
| iMUSE Accessible Arts & Media | 9:30am–6pm | @ FH |
| NE Disabled Swim Club | 10:45am–11:45am | @ NE Pool |
| Helping Hands | 2pm–4pm | @ FH |
| Mums and Toddlers Swim (women only) | 1:45pm–2:45pm | @ NE Pool |
| Movers and Shakers, Accessible Arts & Media (Last session 20 December. Restart 17 January) | 1:45pm–3pm / 3:15pm–4:15pm | @ FH |
| Café Neuro (6 December) | 6pm–7:30pm | @ FH |
| York Garrison Wargamers (last group 20 December) | 6:30pm–10:30pm | @ FH |
| Parkinson's York (second Weds of month, restarting 13 January) | 2pm–3:30pm | @ FH |

Thursday

| | | |
|---|-----------------|----------------|
| My Baby Can Dance: age 6 months–5 years | 10am–10:35am | @ FH |
| Over 50s Keep Fit (Last class 21 December. Restart 4 January) | 9:15am–10am | @ FH |
| Open House | 10am–12pm | @ FH |
| Digital Café (every third Thursday of the month) | 10am–12pm | @FH |
| NE Community Wood Yard | 10am–2:30pm | @ NE Wood Yard |
| Dancercise (Last class 14 December) | 10:30am–11:30am | @ FH |
| York Health Walks (second and fourth Thurs of month) | meet 10:30am | @ FH |

Regular activities December 2023/January 2024

Friday

| | | |
|--|---------------|------------------------|
| NE Community Wood Yard | 10am–2:30pm | @ NE Wood Yard |
| NE Library Rhyme time | 2pm–2:30pm | @ NE Library |
| NE Library Lego Club (3–12yrs) | 3:45pm–4:45pm | @ NE Library |
| The Warm Hub (includes Helping Hands). A warm place with a warm welcome to all | 2–5pm | @ Quaker Meeting House |
| Woodcraft Folk (10–12yrs) | 5:15pm–6:45pm | @Friends Meeting House |
| Café Neuro (third Fri of month from January) | 11:30am–1pm | @ FH |

Saturday

| | | |
|---|--------------|------------------------|
| NE Parkrun | 9am start | @ NE Sports Club Field |
| Community Action for Nature | 10am–12pm | @ Lock Cottage |
| NE Community Garden | 10am–12pm | @ Sleeper Path |
| NE Community Wood Yard | 10am–12:30pm | @ NE Wood Yard |
| Messy Church (5–11yrs, second Sat of month) | 4pm–12:30pm | @ St Andrew's Church |

Sunday

| | | |
|---|---------------|----------------|
| Public Swim (adults only lane swim) | 8:30am–9:15am | @ NE Pool |
| Public Swim | 9:15am–10am | @ NE Pool |
| NE Community Garden | 10am–12pm | @ Sleeper Path |
| NE Community Wood Yard | 10am–12:30pm | @ NE Wood Yard |
| Public Swim | 1:30pm–2:15pm | @ NE Pool |
| Public Swim | 2:15pm–3pm | @ NE Pool |
| Sleeper Market (first Sun of month – December only) | 10am–2:30pm | @ Sleeper Path |

NE Sports Club Are you interested in over 55s walking football on the MUGA tennis/netball courts? Please contact barmanager@newearswicksportsclub.co.uk or ring 01904 750103 to advise your preference of day/time.

One off events in December 2023/January 2024

New Earswick Nature Reserve Christmas Open Day, Saturday 2nd

December, 11.00am to 2pm. There's hand-made Christmas decorations and gifts available. Our raffle will be running again. Also there's a chance to bump into Santa.

Christmas Sleeper Market, Sunday 3rd December, 10am – 2.30pm

Christmas themed with raffle, food, children's lucky dip bran tub and entertainment.

New Earswick Sports Club

Friday 1st December, 7pm. Race night – all welcome

Saturday 2nd December, 7pm. Fahrenheit V live band.

Saturday 23rd December, Kids Christmas party.

Further details and tickets:

<https://www.eventbrite.co.uk/e/childrens-christmas-party-tickets-706616277307>

Monday 25th December, 5.30pm opening on Christmas Day

Sunday 31st December, 6pm. New Year's Eve Family Disco – free entry

Saturday 27th January, 7pm. Dave Rawson Press the Buzzer Quiz

NERF Pantomime Trip, Wednesday 13th December evening. Cost will be £10 per person for all ages and includes free ice cream in the interval. For ticket availability please contact Geoff Bunce on nerf1904@outlook.com or telephone 07530221750.

Film at the Folk Hall, Sunday 17th December, How the Grinch Stole Christmas starring Jim Carrey, 1pm doors open, bar and crafts. 1.30pm food served. 2pm film starts. Tickets £2 adults, £1 child. Available at Folk Hall reception or on Eventbrite.